

GE Capital  
Trailer Fleet Services

# Multi-Temp Reefer Sale: asset with triple value

- ❑ Carry Frozen & Cold at one time...capable of up to three temperature zones !
- ❑ Can convert to a Single-temp
- ❑ Use as Dry Van for backhaul



**2002-04 Models Available NOW at prices \$1000s less than new... Limited Supply !**

**SPEC SUMMARY:** 2002-04 Great Dane/Utility Multi Temp Reefers (Most '03 GD-TK), 53'x13'6"x102, Spring Ride, Roll Door, Alum Flat Floor & Roof, TK SB30 refrigeration units, 10,000-14,000 hours, Flip up bulkheads separate into 3 sections, E-Track, 36" Kingpin, Sliding Axle, White, Aluminum Roof, Sheet & Post, Tires 295/75R 22.5.



Split Bulkheads swing up & down, slide forward & back



Stainless Steel Frame



Ceiling-mounted Dual Rear Evaporators



Simple Controls



Convenient Rear Temp Remote Control



Quick-Release Bulkhead Clips



Secure Cargo with e-track

**AVAILABLE NOW @ AKRON, BALTIMORE, CARLISLE, COLUMBUS, GREENSBORO, INDIANAPOLIS, MOUNTVILLE, RALEIGH, & RICHMOND**

**800-847-1111**

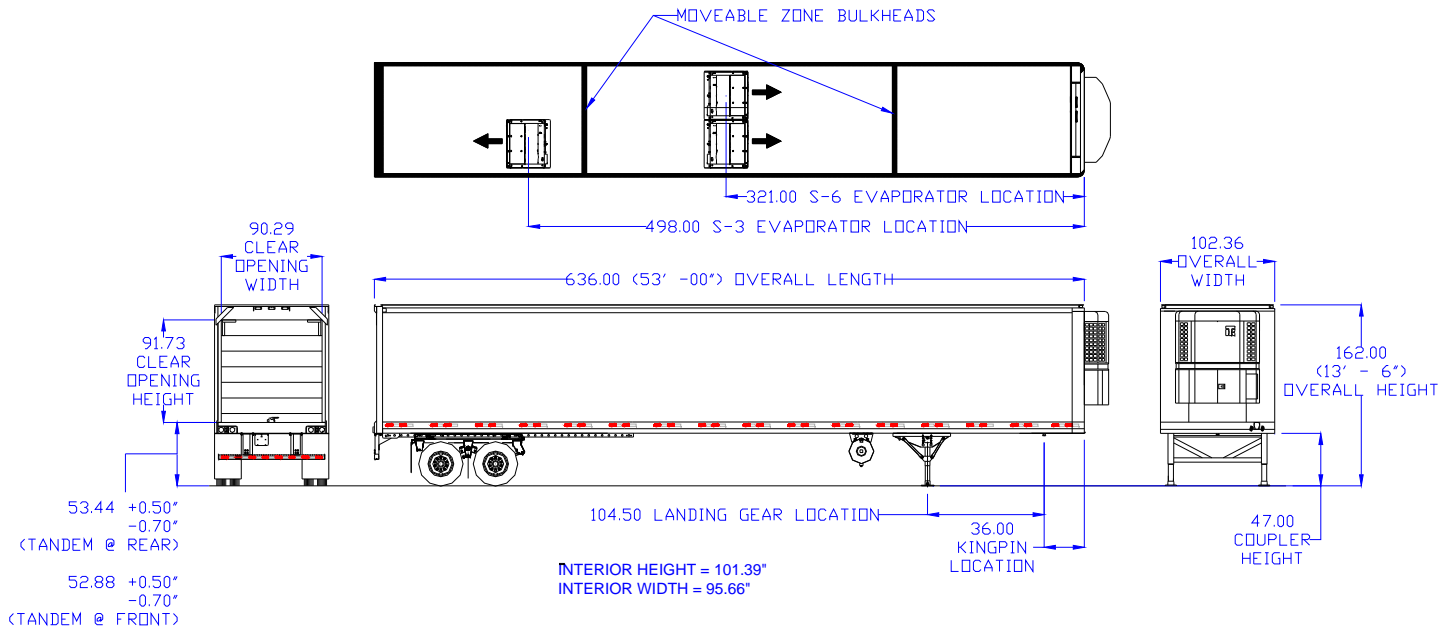


View Two Minute Video of Control Panel and Bulkhead Operation at:

[www.trailerservices.com](http://www.trailerservices.com)

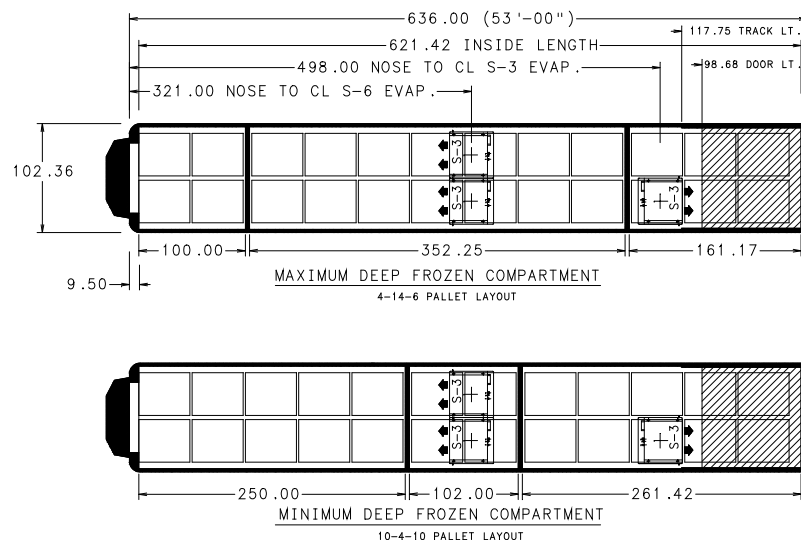
# GE Capital Trailer Fleet Services

## 53' Multi-Temp: Reefer Specifications



### Flexible loading configuration

Source: Great Dane Trailers, Customer Technical Services



- Roll-up Rear Door
- Horizontal non-skid steps on ICC
- 22.5 low pro tires
- Anti-lock brakes
- 3-Zone Temperatures
- ThermoKing SBIII Spectrum SB Whisper Edition
- Auto-start/cycle sentry refrigeration
- S-6 Thermoking center zone refrigeration
- S-3 Thermoking rear zone refrigeration
- 3" insulation walls, 4" roof, floor, front
- Heavy duty safety grip flat floor
- 50 gallon aluminum fuel tank
- 22" heavy duty aluminum scuff liner
- Remote unit control at inside rear
- Front mounted status lights
- Temperature recording Data Acquisition System (DAS)
- One row galvanized cargo track @ 54" above floor
- Two moveable track mounted bulkheads
- Air return bulkhead on front wall
- Hub piloted wheels
- HP parallel spindle axles
- No-lube maintenance landing gear
- Stainless steel rear frame
- Aluminum crossmembers in bay area & forward of landing gear
- Front tire protector plates
- Forklift floor reinforcing package
- Q-Plus brake lining
- Flush rear floor entry

